

# ARCH STREET

A♦P♦A♦R♦T♦M♦E♦N♦T♦ H♦O♦M♦E♦S♦



Living Well Connected



“I Dwell in Possibility.”  
- Emily Dickinson



Living Well Connected is about modern features and amenities that are specifically designed for convenience, luxury and value. It's also about having more quality time to spend with friends and family. At Arch Street Apartment Homes, you can have the best of everything and expect to find an ideal combination of floor plan options, upgraded interiors and flexible spaces that suit your lifestyle. This brand new community is just waiting for you!

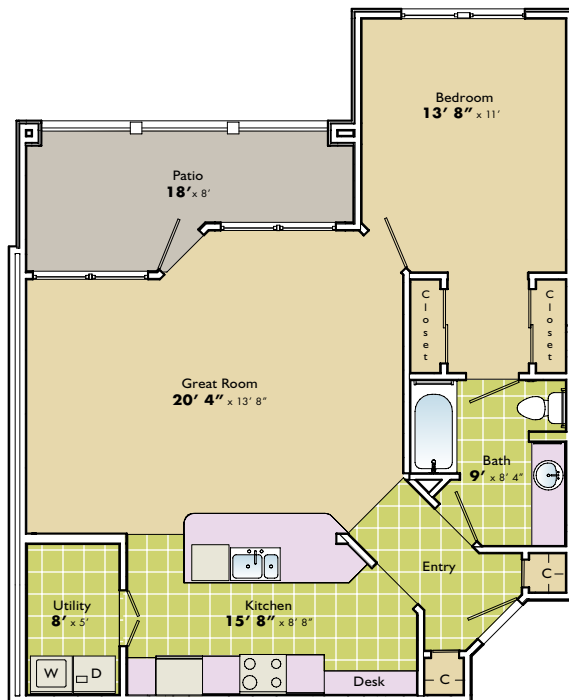
We are ideally located just one mile west of Bridge Street Town Centre and minutes from Cummings Research Park. Take a tour today and find out for yourself how Arch Street Apartment Homes are truly exceptional.

[www.LiveArchStreet.com](http://www.LiveArchStreet.com)

### CHESAPEAKE

846 Square Feet

1 Bedroom, 1 Bathroom with Desk



### GOLDEN GATE

1,105 Square Feet

2 Bedrooms, 2 Bathrooms with Desk



Floor plans and terms subject to change. Square footages are approximate. All renderings, maps, landscaping, elevations and plans are artists' conceptions and not to scale. The developer/builder reserves the right in its sole discretion to make modifications to maps, plans, renderings, specifications, materials, features or colors without notice. Plans, prices, descriptions and amenities are subject to change without notice.

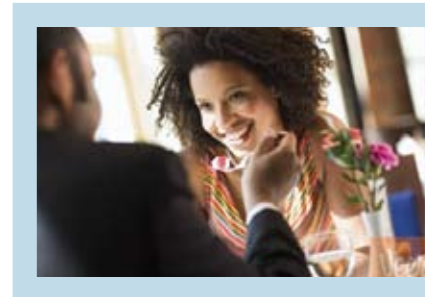
# DISTINCTIONS & FEATURES

- Direct Access Garages Available
- Close to I-565, Redstone Arsenal Gate 9, Cummings Research Park, Intergraph, Boeing and the Jetport
- Washer and Dryer in Every Apartment
- 16" Ceramic Tile in Foyer, Kitchen and Bath
- Gated Entry Access (vehicle access gates are operational after 80% of lease-up and then before and after leasing center business hours)
- Sleek Stainless-Style Whirlpool® Appliance Package Including Dishwasher and Refrigerator with Icemaker
- Resort-Style Saltwater Swimming Pool with Water Feature
- Extra-large Closets with Plenty of Storage
- Eco-Friendly Designer Carpet
- 9' Ceilings and Large Windows Throughout
- 42" Upper Kitchen Cabinets, Pendant Lights and Expanded Countertops in Kitchen
- Clubroom with Fireplace, Plasma TV and Kitchen
- Internet Lounge
- Spacious Fitness Center with Circuits - Cardio and Free Weights
- Emergency Maintenance
- Pets Accepted (breed restrictions apply)

## SKYWAY

1,345 Square Feet

3 Bedrooms, 3 Bathrooms with Storage



www.LiveArchStreet.com



Note: Vehicle access gates are operational after 80% completion of lease-up and then before and after leasing center business hours.

Directions: From the Huntsville International Airport, proceed onto I-565 East and travel approximately 6 miles to Exit 14, heading northbound onto AL-255/Research Park Blvd. Immediately exit onto Madison Pike, turn west onto Madison Pike and proceed westbound 2.7 miles crossing over Slaughter Road. Arch Street Apartment Homes will be on your immediate left after the Slaughter Road stop light.

# ARCH STREET



A·P·A·R·T·M·E·N·T H·O·M·E·S

256.325.4202

7735 Old Madison Pike  
Madison, AL 35758

[www.LiveArchStreet.com](http://www.LiveArchStreet.com)

